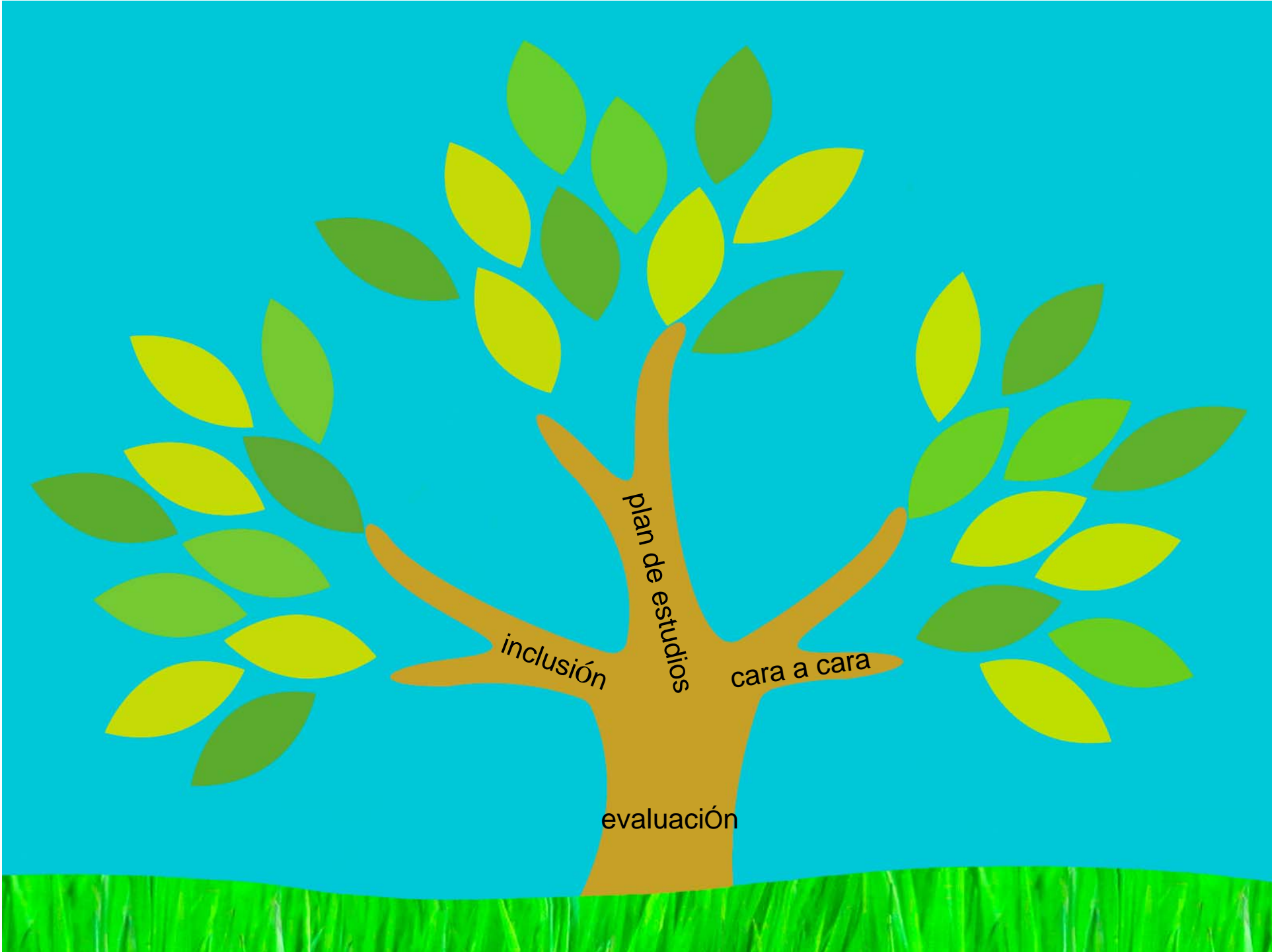


the Swan Centre





evaluación

inclusión

plan de estudios

cara a cara



curriculum

plan de estudios



A stylized illustration of a tree branch with several leaves. The branch is a solid brown color and curves from the bottom right towards the center. The leaves are arranged in a fan-like pattern, with colors ranging from light yellow-green to dark green. The background is a solid cyan color.

life skills

inclusión



























# keyword

Trabajo 'cara a cara' individual











Terapia de Habla y Lenguaje



# Targets

We set targets with parents/carers and other professionals at the Annual Review. The students meet their keyworker regularly to discuss and review their targets. At the end of each term the student, parents/carers, tutor and keyworker review and adapt these targets.



# Monitoring

We monitor how the students are progressing with their targets in their curriculum and Swan Centre lessons through observation and baseline assessments. Students are encouraged to build awareness of their own progress and how to ask for help.

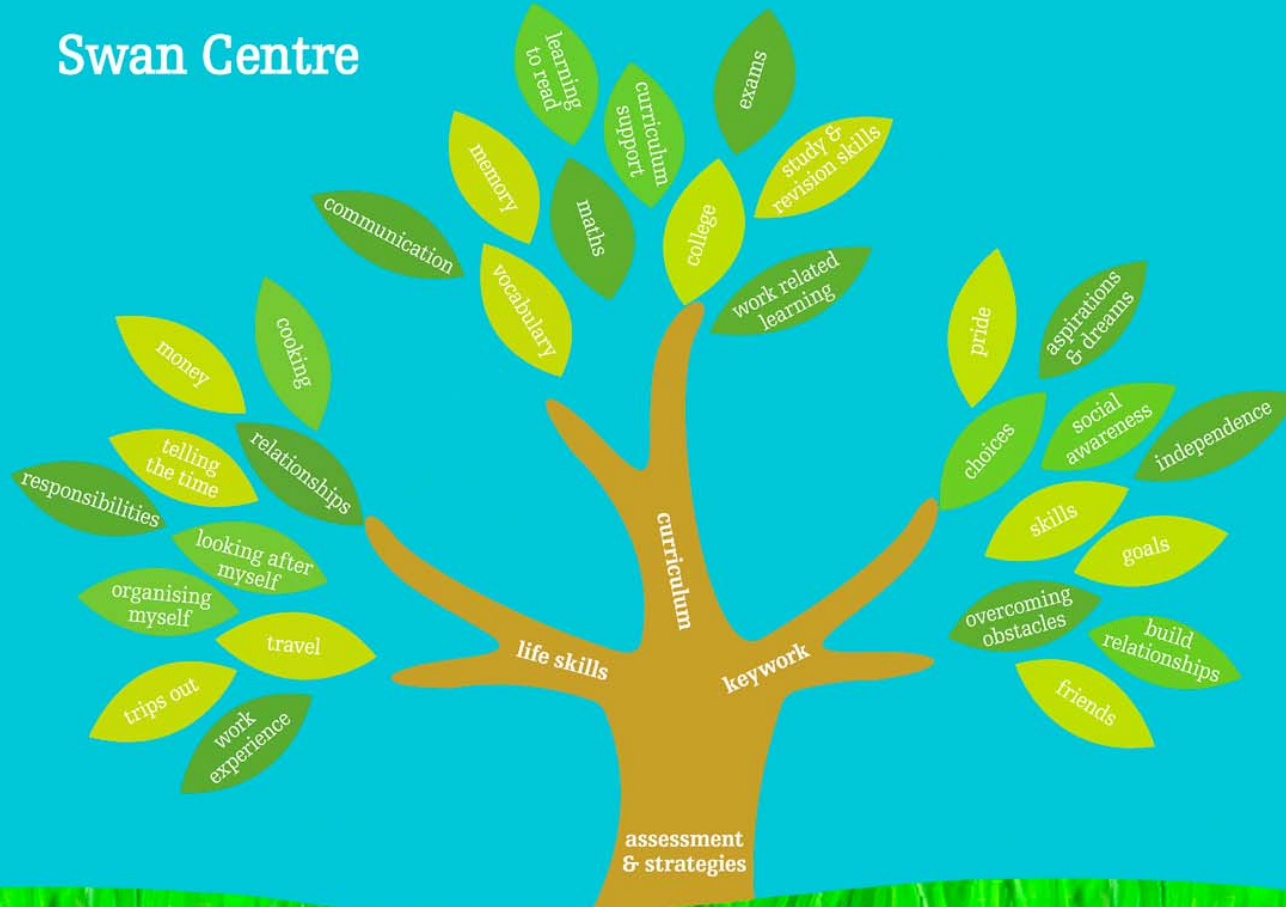


## Liaision

We speak to and meet with parents/carers to share news on progress and good ways to help. We also regularly share useful strategies with curriculum teachers, tutors and Heads of Year. As a team, we liaise daily to monitor the students' progress and wellbeing.



# Swan Centre



## Swan Centre team





Parents/Carers

Primary teachers  
Falmer teachers

School Nurse  
School Counsellor

Speech & Language Therapist

Educational Psychologist

Resources Training





Colleges

Connexions

Other agencies

CAMHS

Social Services

Casework Officer

Educational Welfare Officer

the Swan Centre team



**Billie Brown**  
Teacher in Charge



**Cath Odd Hayward**  
2nd in Charge





**Nicole Pitcher**  
Specialist Teacher



**Louise Andrews**  
Speech & Language Therapist



**Hayley Morton**  
Administrator



**Horatio Turner**  
Communication Assistant



**Julie Pover**  
Communication Assistant



**Ray Burns**  
Communication Assistant



**Bronwen Park**  
Communication Assistant



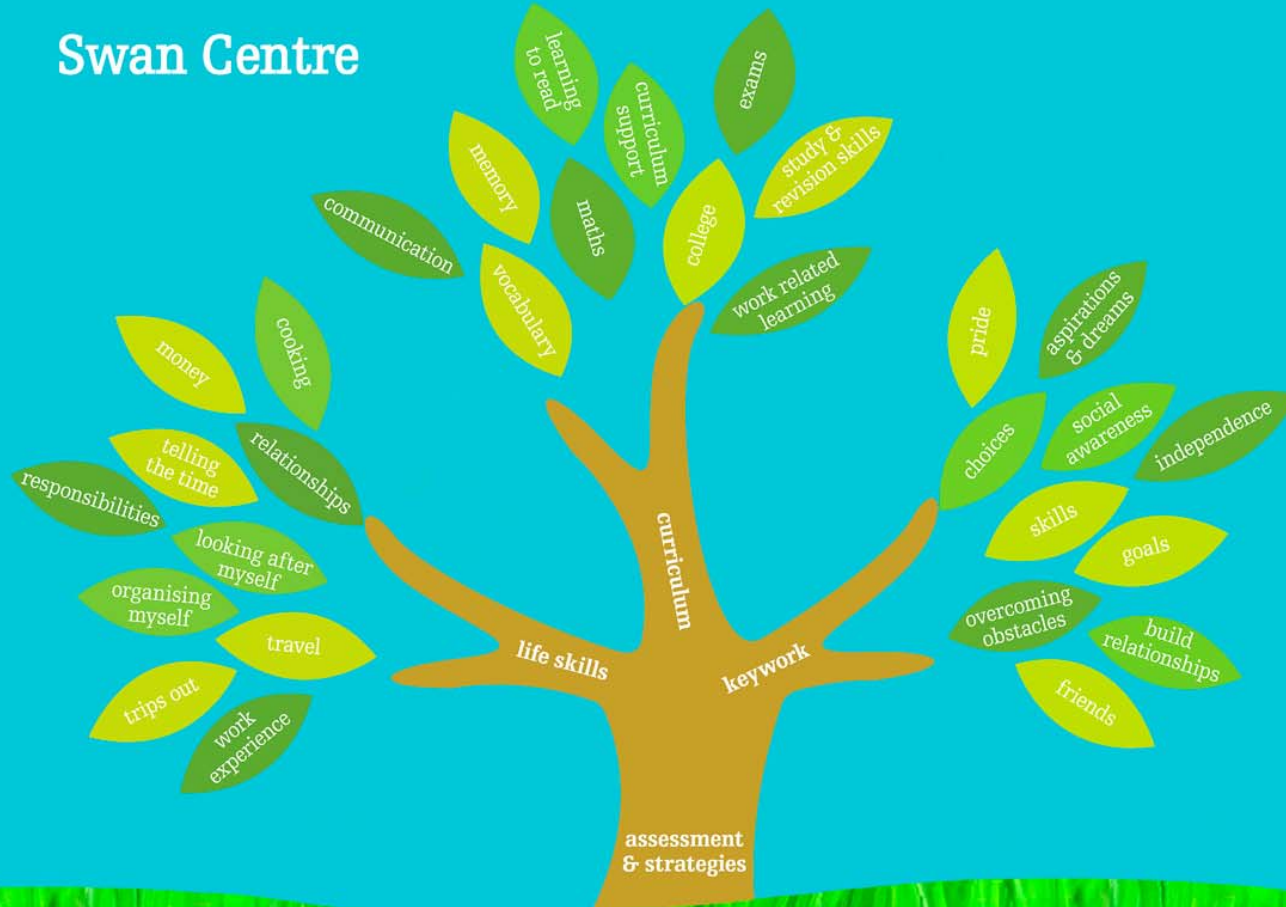
**Val Johnson**  
Communication Assistant



**Mike Clinton**  
Communication Assistant



# Swan Centre



## Swan Centre team

